

VSIMDIM



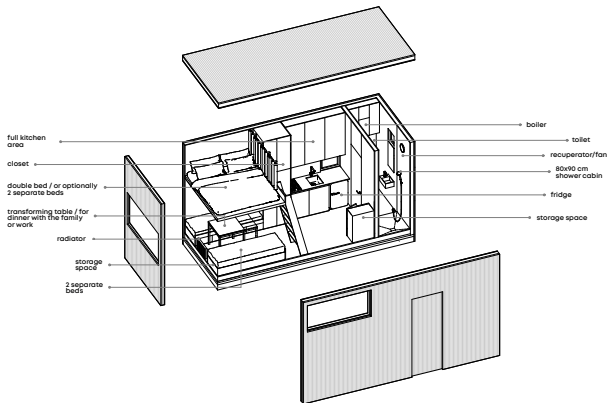


UKRAINIANS DESERVE DECENT HOUSING, EVEN IN DIRE CIRCUMSTANCES

**Vsimdim, a separate housing unit
for temporarily displaced persons,
is equipped with all amenities:
sleeping accommodations,
storage space,
kitchen,
toilet,
shower.**

VSIMDIM

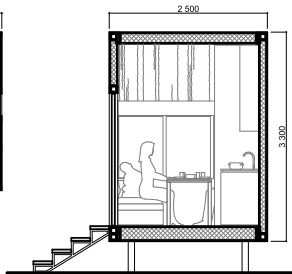
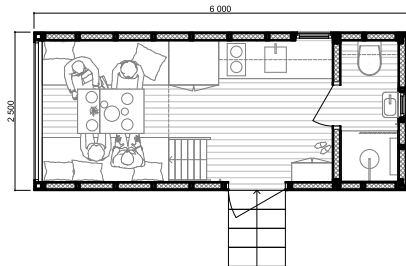
Vsimdim is a factory-made mobile home for temporary housing.
It comes 100% ready to use with appliances and furniture.
Made of environmentally friendly and fireproof materials and is suitable for year-round residence.



VSIMDIM

LAYOUT PLANNING AND SCENARIOS

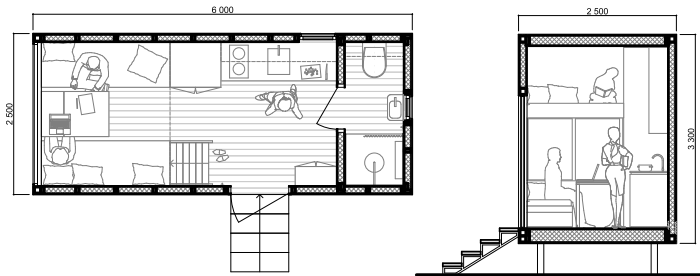
DAYTIME. LUNCH



The space of the house can be transformed to suit the needs of the residents

LAYOUT PLANNING AND SCENARIOS

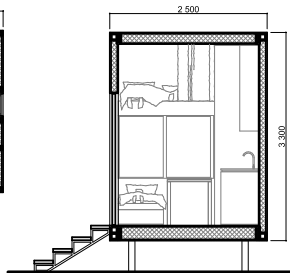
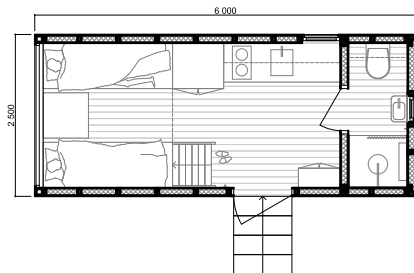
■ DAYTIME. WORK



The space of the house can be transformed to suit the needs of the residents

LAYOUT PLANNING AND SCENARIOS

■ NIGHTTIME. REST

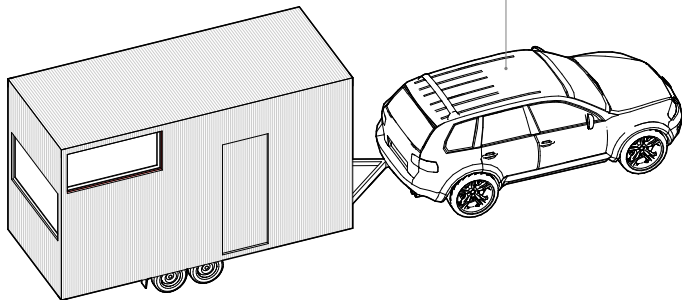


The space of the house can be transformed to suit the needs of the residents

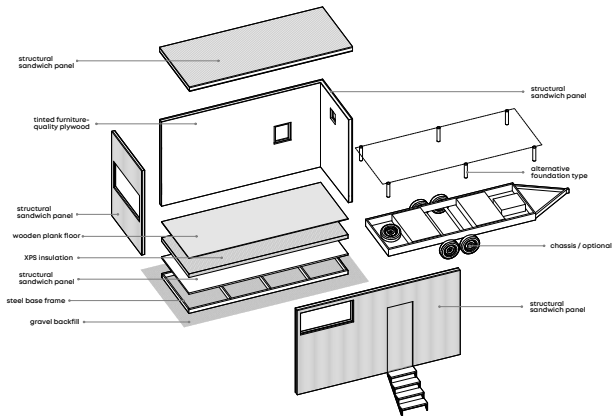
The mobile home can be transported without lifting equipment on its own detachable chassis, using a 3.5 ton tow capacity tractor or on the platform of a truck with subsequent unloading.

Without significant rework and for an additional fee, the house can be upgraded to become autonomous.

The option of making the mobile home autonomous allows using it without reference to the central utilities plant (electricity, water, sewerage).



Constructive components / materials
fire resistance REI 30
dimensions 6*2,5







THE STUDY OF THE EXISTING EXPERIENCE IN UKRAINE

Most often, when settlements for internally displaced persons (IDPs) are planned, the aim is to resettle as many people as possible in the shortest time and at the lowest cost, while the comfort of the residents might be disregarded.

Such settlements are most commonly designed according to the communal (shared) principle, where the members of a displaced family have no personal space, and the kitchen and hygiene zones are shared with other residents.

*container town for IDPs in Nikopol



THE STUDY OF THE EXISTING EXPERIENCE IN UKRAINE

Construction of large-scale settlements requires a sufficient power supply for the arrangement of engineering networks, which are often allocated in the vicinity of the existing settlements.

According to the global experience, and as it has been confirmed in Ukraine*, building of large scale settlements for temporary settlers in areas remote from urban infrastructure makes it difficult for the post-war integration and adaptation of residents to the social and economic infrastructure of the region.

* Study "Rethinking the Container Town for IDPs in Nikopol"
by Deutsche Gesellschaft für Internationale Zusammenarbeit



UKRAINE ALREADY HAS EXPERIENCE IN HOUSING INTERNALLY DISPLACED PEOPLE AFTER THE WAR STARTED IN 2014.

AT THAT TIME, WITH THE SUPPORT OF GERMANY GOVERNMENT AND GIZ FOUNDATION, **7 CAMPS FOR INTERNALLY DISPLACED PEOPLE WERE CONSTRUCTED IN SEVERAL UKRAINIAN CITIES:** IN KHARKOV, DNIPRO, PAVLOGRAD, ZAPORIZHZHIA, KAMIANSKIE, KRYVYI RIH AND NIKOPOL.



VSIMDIM

All those camps were created **as temporary housing for 3-4 years**: over that time, the inhabitants were supposed to return to their normal life and find a permanent home instead of a container house.

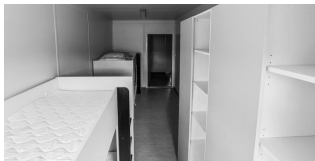
Unfortunately, **9 years later, 70%* of the residents are still living in the container camps.***



* Study "Rethinking the Container Town for IDPs in Nikopol"
by Deutsche Gesellschaft für Internationale Zusammenarbeit

WHY DID THAT HAPPEN?

- THE SETTLEMENTS ARE LOCATED FAR FROM THE EXISTING INFRASTRUCTURE AND TRANSPORTATION HUBS.
- A PSYCHOLOGICAL AND SOCIAL ADAPTATION PROGRAM HAS NOT BEEN IMPLEMENTED, SO THE DISPLACED PEOPLE ARE FINDING IT HARD TO GET A NEW JOB AND RENEW THEIR NORMAL LIFE.
- FAMILIES WITH SIMILAR PSYCHOLOGICAL TRAUMA WERE HOUSED CLOSE TO ONE ANOTHER, AND THIS LEAD TO A COLLECTIVE FEELING OF ISOLATION AND LEARNED HELPLESSNESS.
- DUE TO THE LACK OF DIGNITY AND SUPPORT THE CAMPS, UNFORTUNATELY, TURNED INTO GHETTOS.



AFTER LOSING THEIR HOMES AND EXPERIENCING THE WAR TIME PAINS, THE INTERNALLY DISPLACED PEOPLE WERE ABANDONED ALL ALONE WITH THEIR PROBLEMS AND HAD NO ENERGY FOR BECOMING INDEPENDENT.

HOW DO WE ENVISION TEMPORARY HOUSING?

- **DECENT**, YET ONLY COMFORTABLE FOR TEMPORARY LIVING — ENABLING FASTER ADAPTATION
- **SMALL SETTLEMENTS FORMAT** — UP TO 10 FAMILIES IN EACH
- RESOURCE-EFFICIENT APPROACH, **MINIMIZED FACILITY COSTS**
- READY FOR **QUICK TRANSITION** — IN RESPONSE TO THE UPCOMING CHALLENGES
- LOCATED **CLOSE TO THE EXISTING SOCIAL INFRA-STRUCTURE AND WORK FACILITIES**

Targeted placement of mobile homes
VSIMDIM houses will allow to eliminate
the difficulties of integrating resettlers
in the future, because they:

+ can be placed as part of
micro-settlements on small vacant lots,
which does not isolate the residents;

+ can be moved quickly and
cost-effectively to another site or
even to another region;
+ have all the necessary amenities
inside the house, which creates a
decent environment for family life.



VSIMDIM



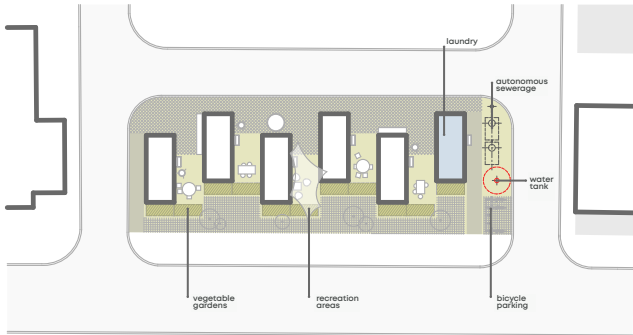
VSIMDIM

DEVELOPMENT SCHEME OPTION 1

plot size: 34 x 12 m (4 ares)
the number of houses: 5
the number of residents: up to 20

power supply capacity needed: up to
27 kW (5 kW per house*)
water consumption per week: 12 m³

* Power supply capacity can be reduced to 2 kW
by the use of gas appliances instead of electric ones.

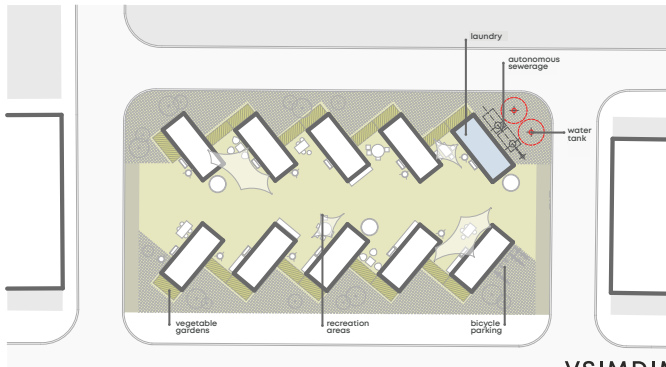


DEVELOPMENT SCHEME OPTION 2

plot size: 40 x 21 m (8,5 ares)
the number of houses: 9
the number of residents: up to 36

power supply capacity needed: up to
50 kW (5 kW per house*)
water consumption per week: 25 m³

*Power supply capacity can be reduced to 2 kW by the use
of gas appliances instead of electric ones.



ENERGY EFFICIENCY

VSIMDIM HOUSES WITH INDEPENDENT HEATING ARE DESIGNED FOR YEAR-ROUND COMFORTABLE LIVING.

DUE TO THE FACT THAT THE HOUSE IS WELL INSULATED, IT NEEDS ONLY A SMALL SOURCE OF HEAT.



PIR INSULATION

OR POLYURETHANE FOAM, A MATERIAL THAT IS USED IN EVERY MODERN REFRIGERATOR.

1,8 KW

REQUIRED THERMAL CAPACITY

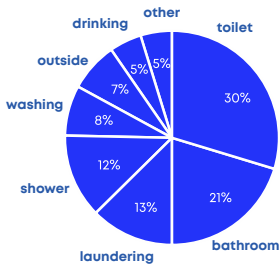
$R = 3,63 - 5,45$ M² K/W

WARM LOSS RESISTANCE THAT EXCEEDS THE UKRAINIAN BUILDING STANDARDS BY 10%

REDUCED HEATING COSTS = MORE FAMILIES HOUSED FOR THE SAME BUDGET.

SAVING WATER

WHERE DOES THE WATER FLOW?



MOST OF THE LAND PLOTS THAT CAN BE RENTED OUT FOR TEMPORARY HOUSING:

Have electricity, or can be quickly connected to the power lines;

Have borehole capacity, in rare cases have centralized water supply;

Do not have sewage, require the installation of a septic tank or deployment of local sewage facilities.

WHY SAVE WATER?

The implementation of centralized water and sewage facilities is irrational, taking into account the condition that 5-9 families will be using them at land plots that are close to infrastructure and working facilities.

Construction of local wastewater treatment facilities is one of the biggest costs in settlements. Therefore, the greater the water consumption, the greater the capacity of local wastewater treatment facilities.

SAVING WATER

HOW DO VSIMDIM HOUSES SAVE WATER AND SEWAGE CAPACITY?

FAUCET AERATORS -10%

WATER-EFFICIENT SHOWER HEADS -15%

SHOWER SHUT-OFF VALVES -40%



REDUCED CAPITAL INVESTMENT
INTO THE IMPLEMENTATION OF
SEWAGE FACILITIES

=

MORE HOUSED FAMILIES

VSIMDIM

MOBILITY



THE VSIMDIM HOUSE CAN BE TRANSPORTED ON A TRAILER WITH THE HELP OF A CAR WITH A TRACTION FORCE OF 3.5 TONS. MERCEDES SPRINTER, MITSUBISHI L200, FORD F150, VOLKSWAGEN TOUAREG ETC. OR ON A TRUCK WITH SUBSEQUENT UNLOADING.

THE VSIMDIM HOUSE CAN BE:

NON AUTONOMOUS

THE HOUSE IS FULLY POWERED BY 220V, CONNECTED TO SEWAGE AND WATER

AUTONOMOUS

THE HOUSE ALLOWS YOU TO TEMPORARILY OPERATE IT WITHOUT BEING CONNECTED TO CENTRAL COMMUNICATIONS (ELECTRICITY, WATER, SEWAGE)

*A NON-AUTONOMOUS RESIDENTIAL MODULE CAN BE EQUIPPED WITH AUTONOMOUS EQUIPMENT AND CHASSIS FOR AN ADDITIONAL FEE

VSIMDIM

HOUSES AFTER THE VICTORY



- A TEMPORARY SHELTER FOR WOMEN AFFECTED BY DOMESTIC VIOLENCE. THIS INITIATIVE CAN BE IMPLEMENTED UNDER THE LEADERSHIP OF A FOUNDATION THAT PROTECTS WOMEN'S RIGHTS AND CREATES REHABILITATION PROGRAMS.
- PART OF A PALLIATIVE PROGRAM AS A TEMPORARY OUTDOOR BUILDING. AS A PLACE FOR FAMILIES WITH TERMINALLY ILL AND DYING CHILDREN TO SPEND TIME TOGETHER. THIS INITIATIVE CAN BE IMPLEMENTED UNDER THE LEADERSHIP OF A FOUNDATION THAT CARES FOR SERIOUSLY ILL CHILDREN AND THEIR FAMILIES.
- THE BASIS FOR AN OUTDOOR SOCIAL SUMMER CAMP FOR CHILDREN.
- EACH HOUSE CAN BE TURNED INTO AN AUTONOMOUS HOUSE ON WHEELS TO COMFORTABLY TRAVEL AROUND UKRAINE AND BE ALONE WITH OUR INCREDIBLE NATURE. THIS WAS OUR BIG IDEA BEFORE THE WAR.

VSIMDIM HOUSES ARE DESIGNED AND PRODUCED IN UKRAINE.



IN PRODUCTION, WE COOPERATE WITH UKRAINIAN MANUFACTURERS AND SUPPLIERS. THIS SUPPORTS WORKING PLACES AND THE ECONOMY OF UKRAINE.

VSIMDIM

LET'S BUILD VSIMDIM!

website:

vsimdim.org

Kyrylo Yarko
+38 093 128 28 21
vsimdimua@gmail.com

instagram: [@vsimdim](#)
facebook: [@vsimdim](#)